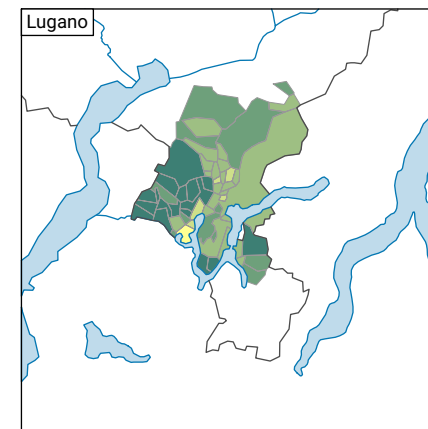
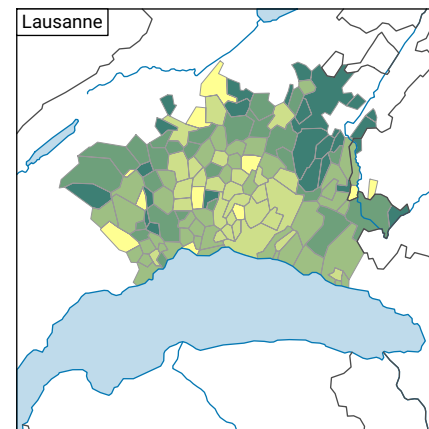
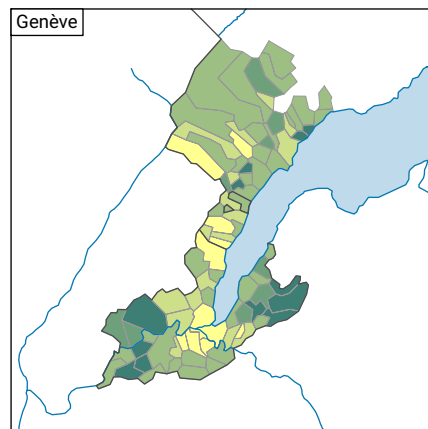
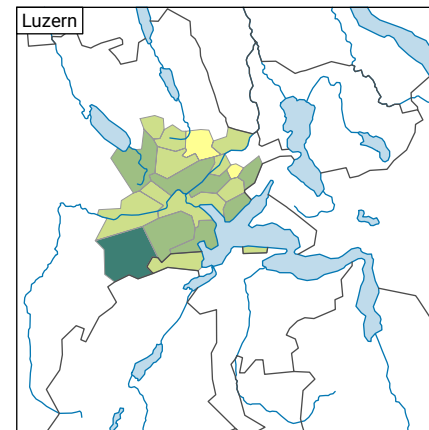
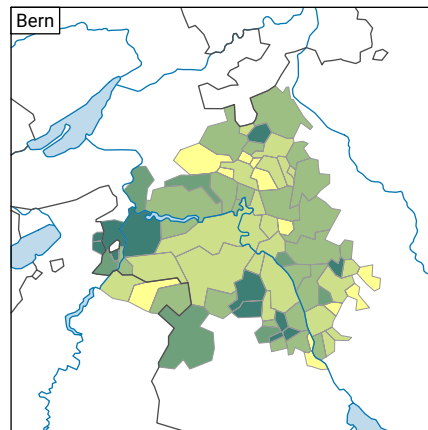
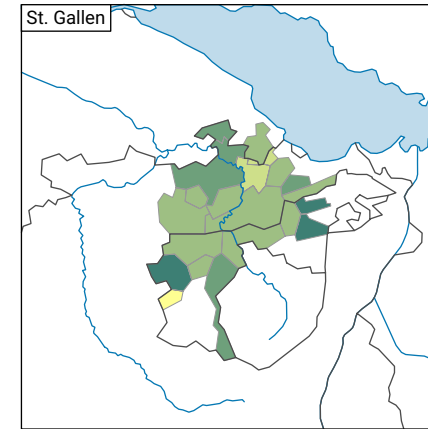
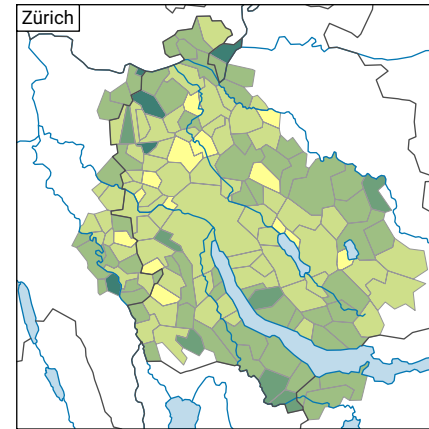
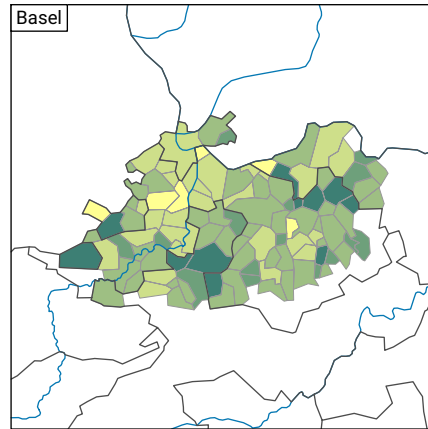
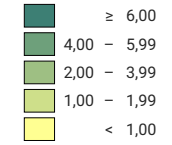


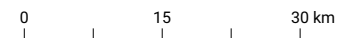
Arrêts de transports en commun, en 2015



Nombre d'arrêts du réseau de transports en commun* pour 1000 habitants**



* Horaire électronique 2014/2015
 ** Population résidante permanente au 01.01.2015
 (=31.12.2014)



Niveau géographique:
 Audit urbain: communes d'agglomération (périmètre villes)

