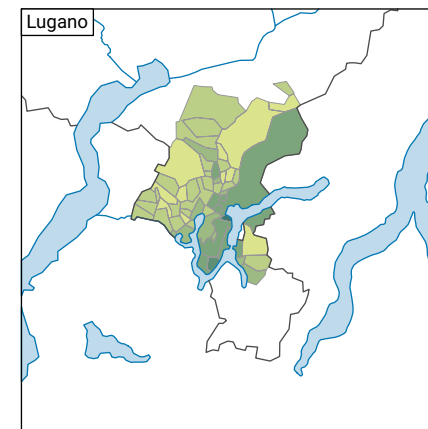
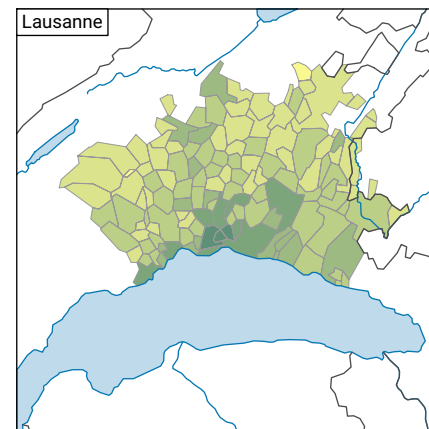
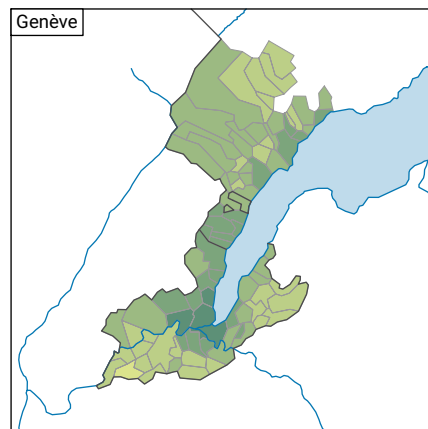
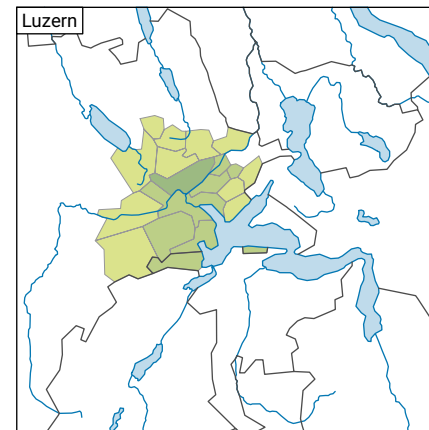
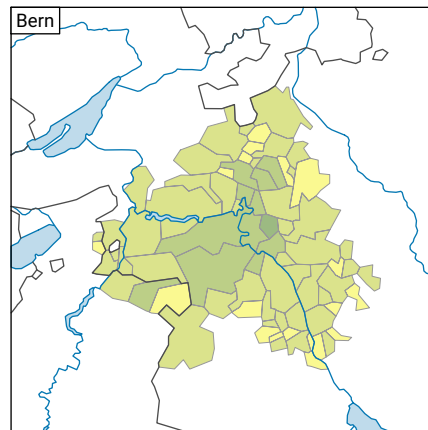
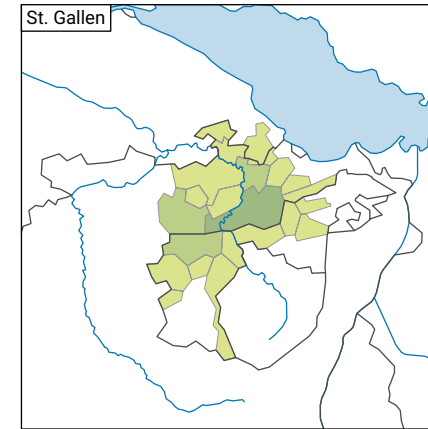
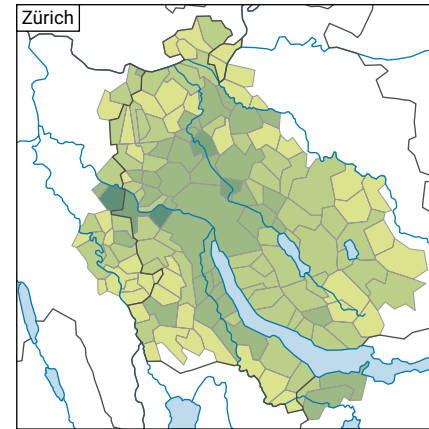
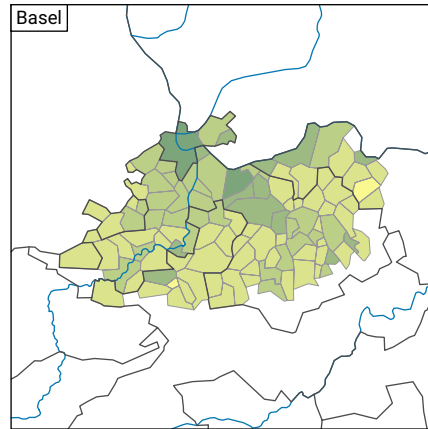
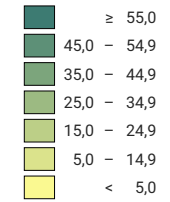


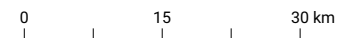
Ständige ausländische Wohnbevölkerung, 2015



Anteil der ständigen ausländischen Wohnbevölkerung an der gesamten ständigen Wohnbevölkerung*, in %



* Ständige Wohnbevölkerung am 01.01.2015 (= 31.12.2014)



Raumgliederung:
Urban Audit: Agglomerationsgemeinden (Städte-Perimeter)

